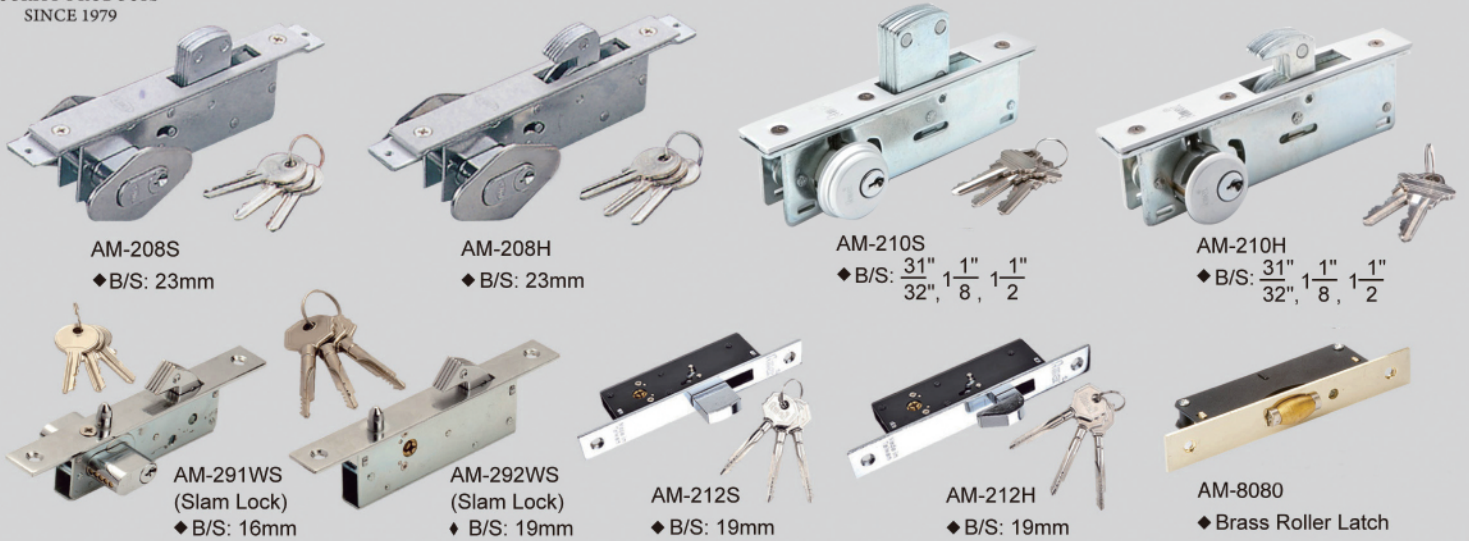




SECURITY PRODUCTS  
SINCE 1979

# Door and Window Locks & Hardware



AM-208S  
◆ B/S: 23mm

AM-208H  
◆ B/S: 23mm

AM-210S  
◆ B/S:  $\frac{31}{32}$ ",  $1\frac{1}{8}$ ",  $1\frac{1}{2}$ "

AM-210H  
◆ B/S:  $\frac{31}{32}$ ",  $1\frac{1}{8}$ ",  $1\frac{1}{2}$ "

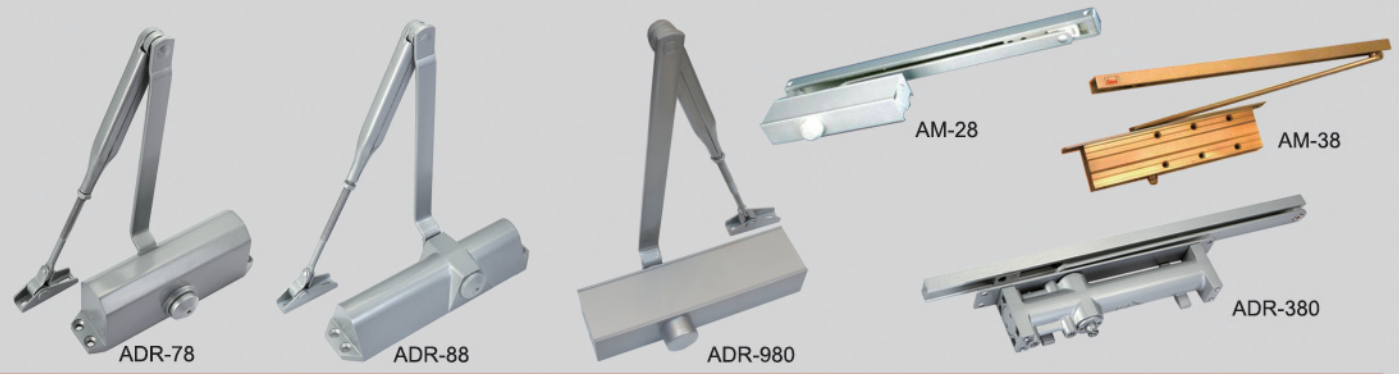
AM-291WS  
(Slam Lock)  
◆ B/S: 16mm

AM-292WS  
(Slam Lock)  
◆ B/S: 19mm

AM-212S  
◆ B/S: 19mm

AM-212H  
◆ B/S: 19mm

AM-8080  
◆ Brass Roller Latch



ADR-78

ADR-88

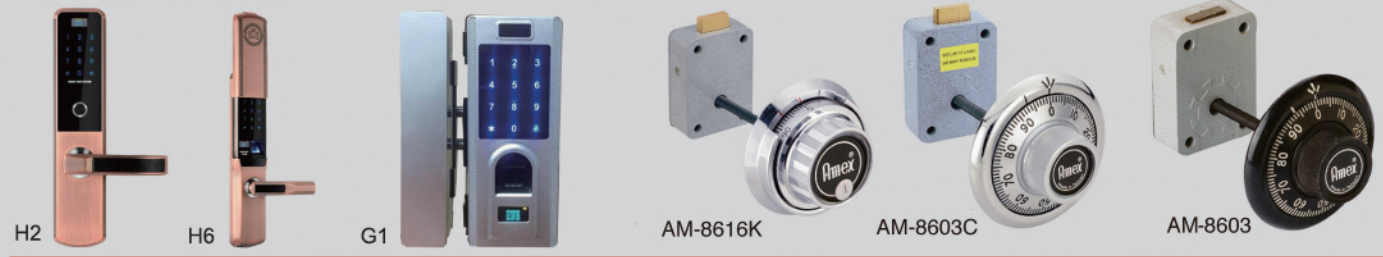
ADR-980

AM-28

AM-38

ADR-380

## Smart Lock



H2

H6

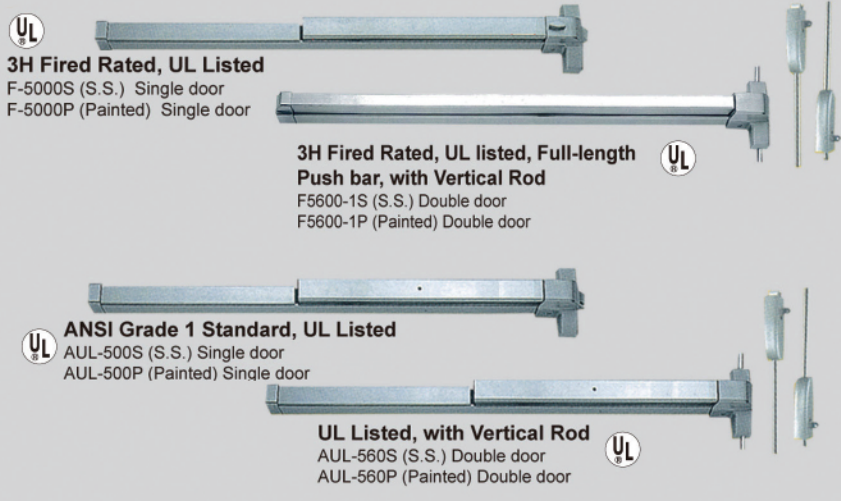
G1

AM-8616K

AM-8603C

AM-8603

## Panic Exit Device



**UL**  
3H Fired Rated, UL Listed  
F-5000S (S.S.) Single door  
F-5000P (Painted) Single door

**UL**  
3H Fired Rated, UL listed, Full-length  
Push bar, with Vertical Rod  
F5600-1S (S.S.) Double door  
F5600-1P (Painted) Double door

**UL**  
ANSI Grade 1 Standard, UL Listed  
AUL-500S (S.S.) Single door  
AUL-500P (Painted) Single door

**UL**  
UL Listed, with Vertical Rod  
AUL-560S (S.S.) Double door  
AUL-560P (Painted) Double door

## Trim For Panic Exit Device



001-1

006-1S

003

016

004

005

009



## Amex Hardware Co., Ltd.

14F., No.38 Tingchow Road, Sec. 2, Taipei 10080, Taiwan

Tel: 886-2-2367-7792/3

Fax: 886-2-2367-7794

E-mail: amexlock@ms15.hinet.net

<http://www.amexlock.com>

